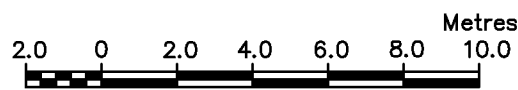


# Strata Plan of Lot 2, Section 72, Sooke District, Plan VIP88836.

BCGS 92B.032

Sheet 1 of 8 Sheets

Strata Plan EPS620



The intended plot size of this plan is 432 mm in width by 559 mm in height (C size) when plotted at a scale of 1:200

### Legend:

Grid Bearings are derived from Plan EPP17035.

This plan shows horizontal ground-level distances, in metres and decimals thereof unless otherwise indicated.

All building corners are either 45° or 90° unless otherwise indicated.

All strata lots and LCP areas are defined as to height by the centre of the floor above or its extensions, or where there is no floor above, by the average height of the strata lot within the same building, unless otherwise indicated.

- Pt Denotes Part
- CP Denotes Common Property
- LCP Denotes Limited Common Property appurtenant to adjacent SL if not noted otherwise
- m<sup>2</sup> Denotes Square metres
- SL Denotes Strata Lot
- P.A. Denotes Part Area
- T.A. Denotes Total Area
- PFB Denotes Perimeter of Floor Below
- Gas Denotes Gas Closet
- Vent Denotes Ventilation Shaft
- Vest Denotes Vestibule
- Elec Denotes Electrical Closet
- OTB Denotes Open to Below
- Lead Plug Found
- Standard Iron Post Found

### Civic Addresses:

- SL 1 = 102 - 6591 Lincroft Road
  - SL 2 = 104 - 6591 Lincroft Road
  - SL 3 = 106 - 6591 Lincroft Road
  - SL 4 = 108 - 6591 Lincroft Road
  - SL 5 = 109 - 6591 Lincroft Road
  - SL 6 = 107 - 6591 Lincroft Road
  - SL 7 = 105 - 6591 Lincroft Road
  - SL 8 = 103 - 6591 Lincroft Road
  - SL 9 = 101 - 6591 Lincroft Road
  - SL 10 = 202 - 6591 Lincroft Road
  - SL 11 = 204 - 6591 Lincroft Road
  - SL 12 = 206 - 6591 Lincroft Road
  - SL 13 = 208 - 6591 Lincroft Road
  - SL 14 = 207 - 6591 Lincroft Road
  - SL 15 = 205 - 6591 Lincroft Road
  - SL 16 = 203 - 6591 Lincroft Road
  - SL 17 = 201 - 6591 Lincroft Road
  - SL 18 = 302 - 6591 Lincroft Road
  - SL 19 = 304 - 6591 Lincroft Road
  - SL 20 = 306 - 6591 Lincroft Road
  - SL 21 = 308 - 6591 Lincroft Road
  - SL 22 = 307 - 6591 Lincroft Road
  - SL 23 = 305 - 6591 Lincroft Road
  - SL 24 = 303 - 6591 Lincroft Road
  - SL 25 = 301 - 6591 Lincroft Road
  - SL 26 = 402 - 6591 Lincroft Road
  - SL 27 = 404 - 6591 Lincroft Road
  - SL 28 = 406 - 6591 Lincroft Road
  - SL 29 = 408 - 6591 Lincroft Road
  - SL 30 = 407 - 6591 Lincroft Road
  - SL 31 = 405 - 6591 Lincroft Road
  - SL 32 = 403 - 6591 Lincroft Road
  - SL 33 = 401 - 6591 Lincroft Road
- Sooke, B.C.

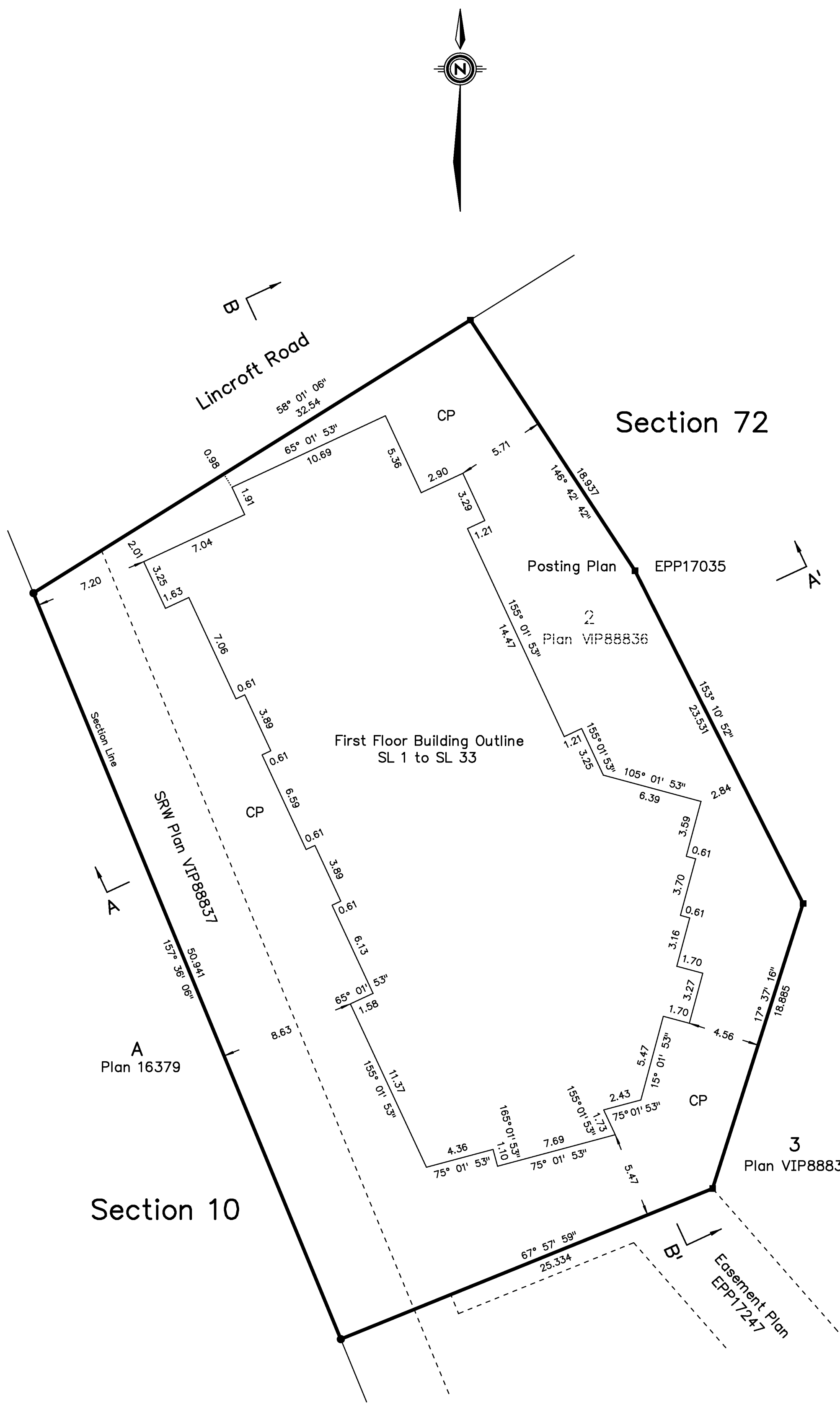
The address for service of documents for the strata corporation is:

The Owners, Strata Plan EPS620  
c/o Windsor Law Group  
#200 - 931 Fort St,  
Victoria, British Columbia, V8V 3K3

### McIlvane Riley Land Surveying Inc.

#113 - 2244 Sooke Road  
Victoria, B.C. V9B 1X1  
(250) 474-5538

File: 4919STRATA-EPS620



The building included in this strata plan has not been previously occupied.

The building shown hereon is within the external boundaries of the land that is the subject of the strata plan.

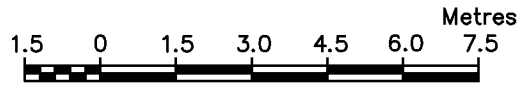
This plan lies within the Capital Regional District and the District of Sooke

The field survey represented by this plan was completed by Minda C. Riley, BCLS on the 20th day of December, 2011.

# Parking Level

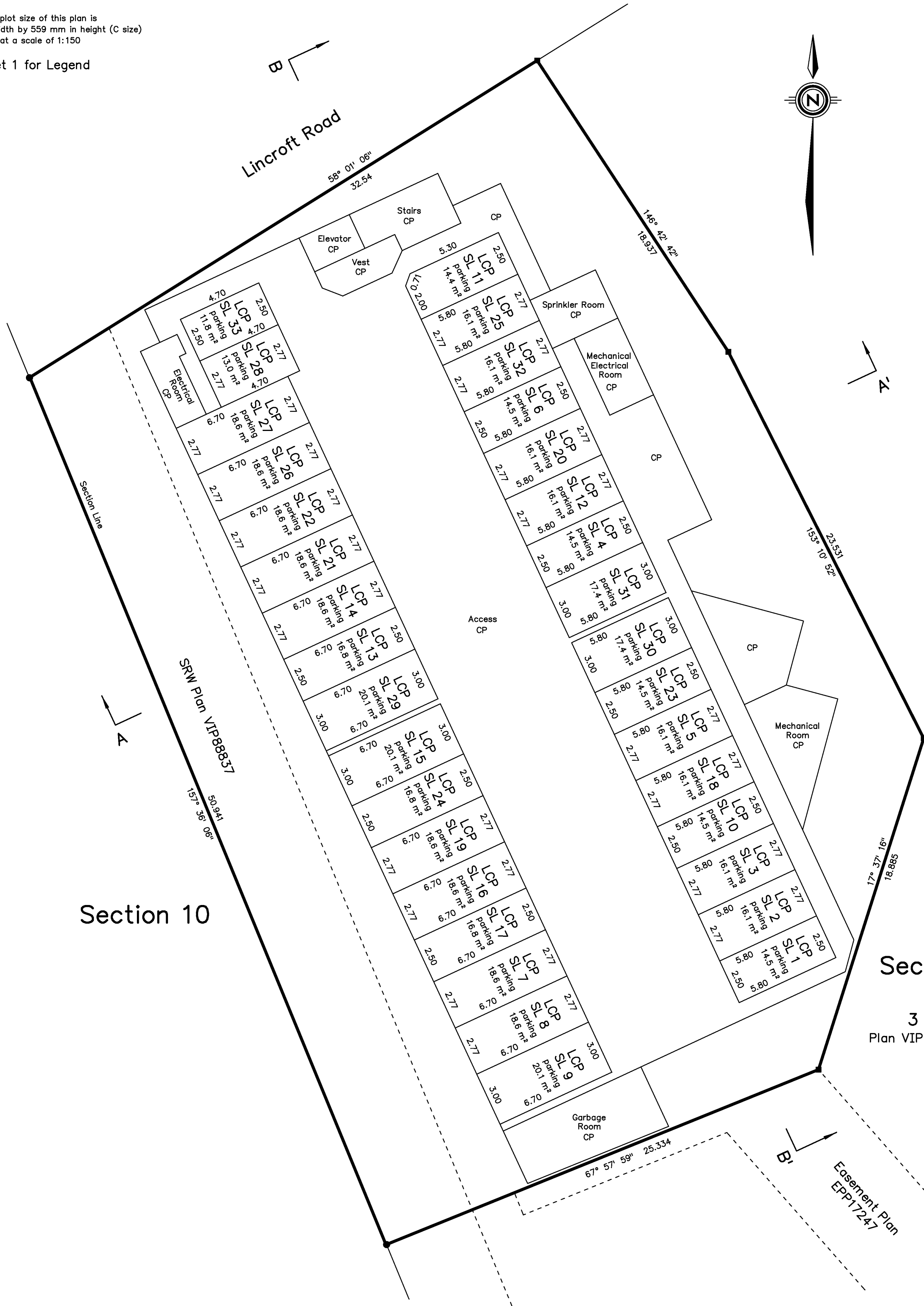
Sheet 2 of 8 Sheets

## Strata Plan EPS620



The intended plot size of this plan is 432 mm in width by 559 mm in height (C size) when plotted at a scale of 1:150

See Sheet 1 for Legend



### Section 10

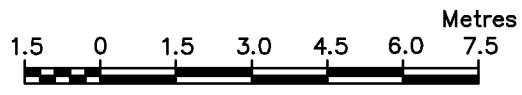
### Section 72

3  
Plan VIP88836

# Floor Plans - First Floor Strata Lots 1 to 9

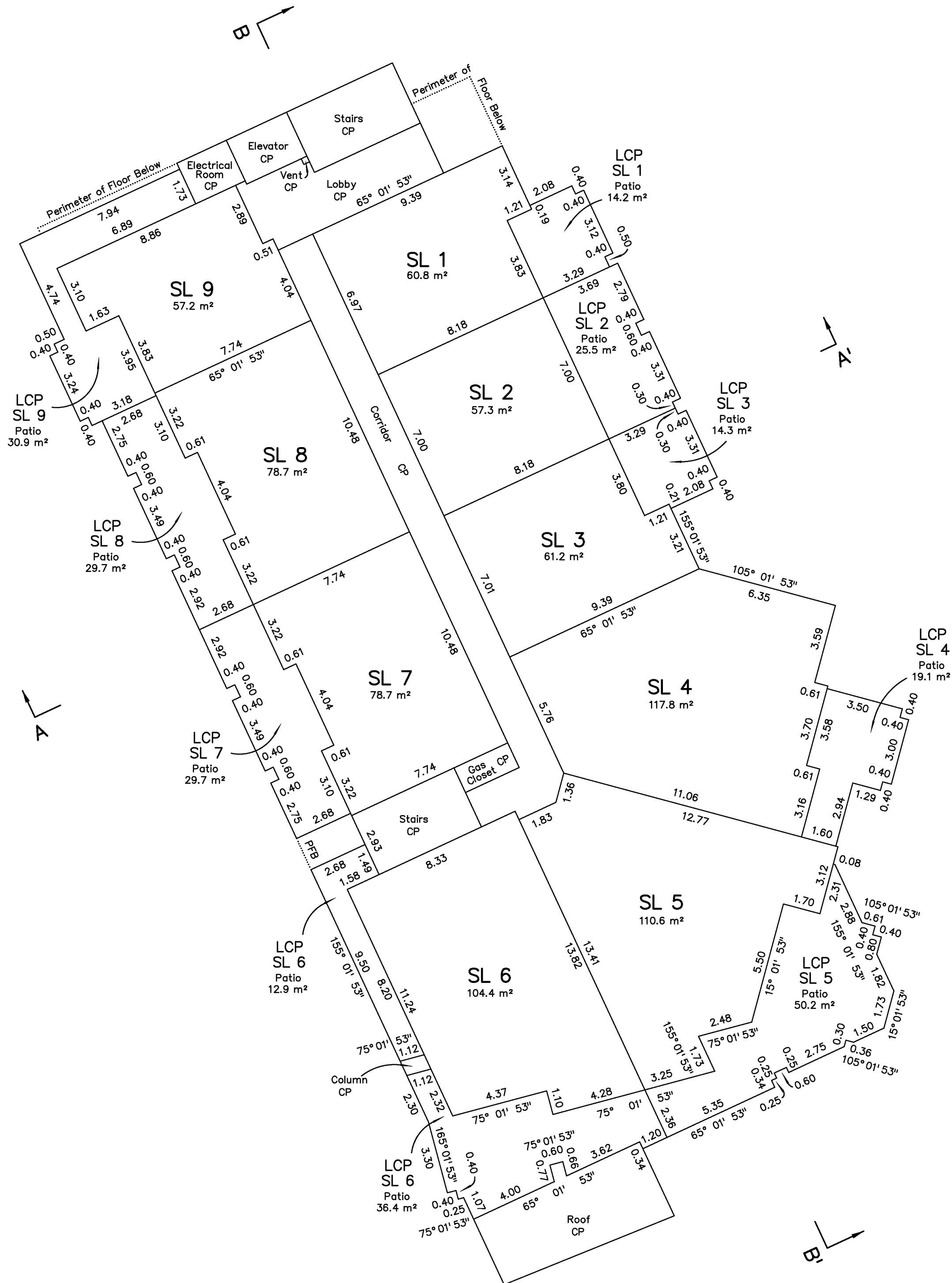
Sheet 3 of 8 Sheets

## Strata Plan EPS620



The intended plot size of this plan is 432 mm in width by 559 mm in height (C size) when plotted at a scale of 1:150

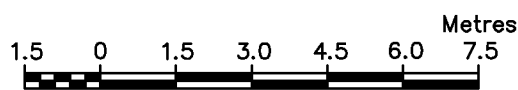
See Sheet 1 for Legend



# Floor Plans - Second Floor Strata Lots 10 to 17

Sheet 4 of 8 Sheets

## Strata Plan EPS620

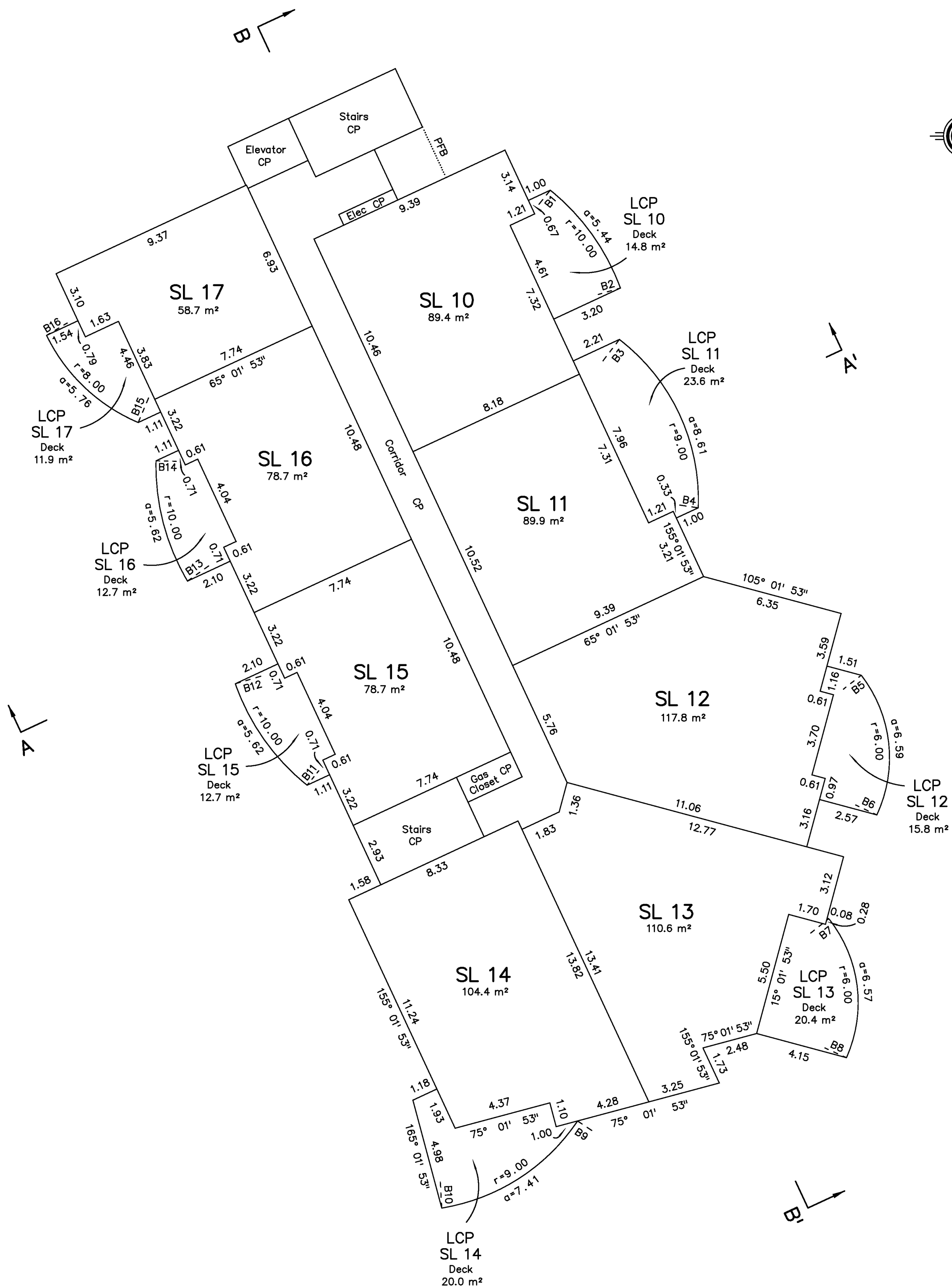


The intended plot size of this plan is 432 mm in width by 559 mm in height (C size) when plotted at a scale of 1:150

See Sheet 1 for Legend

Radial Bearing Table

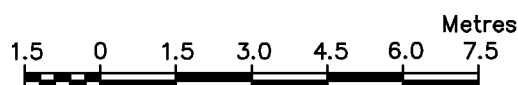
Number	Radial Bearing
B1	38° 49' 09"
B2	69° 59' 17"
B3	37° 36' 30"
B4	92° 25' 17"
B5	52° 10' 38"
B6	115° 06' 26"
B7	51° 21' 21"
B8	114° 05' 41"
B9	123° 46' 31"
B10	170° 56' 56"
B11	38° 37' 49"
B12	70° 49' 50"
B13	59° 14' 42"
B14	91° 26' 43"
B15	22° 55' 05"
B16	64° 10' 16"



# Floor Plans - Third Floor Strata Lots 18 to 25

Sheet 5 of 8 Sheets

## Strata Plan EPS620

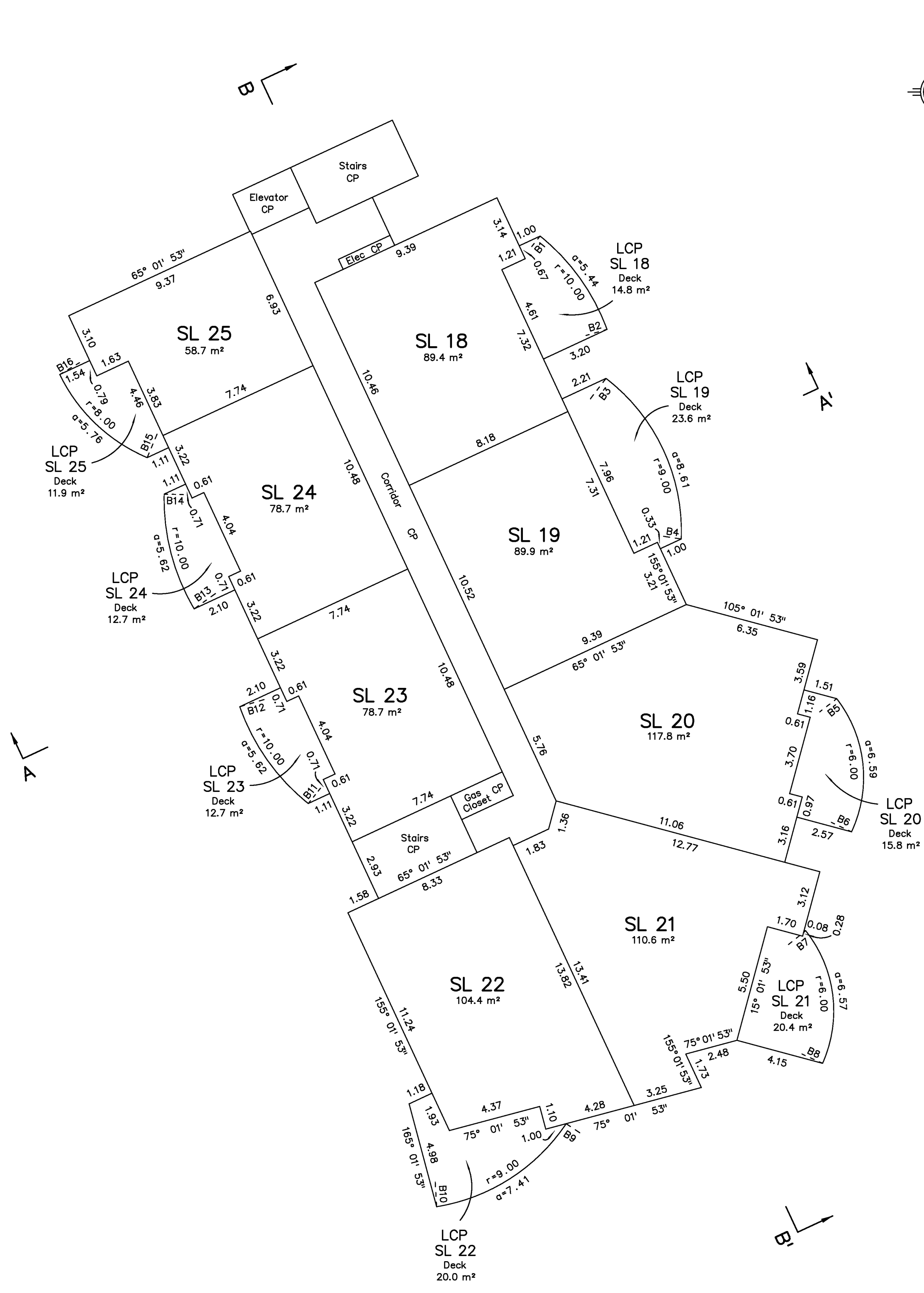


The intended plot size of this plan is 432 mm in width by 559 mm in height (C size) when plotted at a scale of 1:150

See Sheet 1 for Legend

### Radial Bearing Table

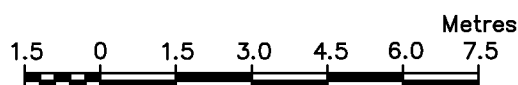
Number	Radial Bearing
B1	38° 49' 09"
B2	69° 59' 17"
B3	37° 36' 30"
B4	92° 25' 17"
B5	52° 10' 38"
B6	115° 06' 26"
B7	51° 21' 21"
B8	114° 05' 41"
B9	123° 46' 31"
B10	170° 56' 56"
B11	38° 37' 49"
B12	70° 49' 50"
B13	59° 14' 42"
B14	91° 26' 43"
B15	22° 55' 05"
B16	64° 10' 16"



# Floor Plans - Fourth Floor Parts Strata Lots 26 to 32 and SL 33

Sheet 6 of 8 Sheets

Strata Plan EPS620

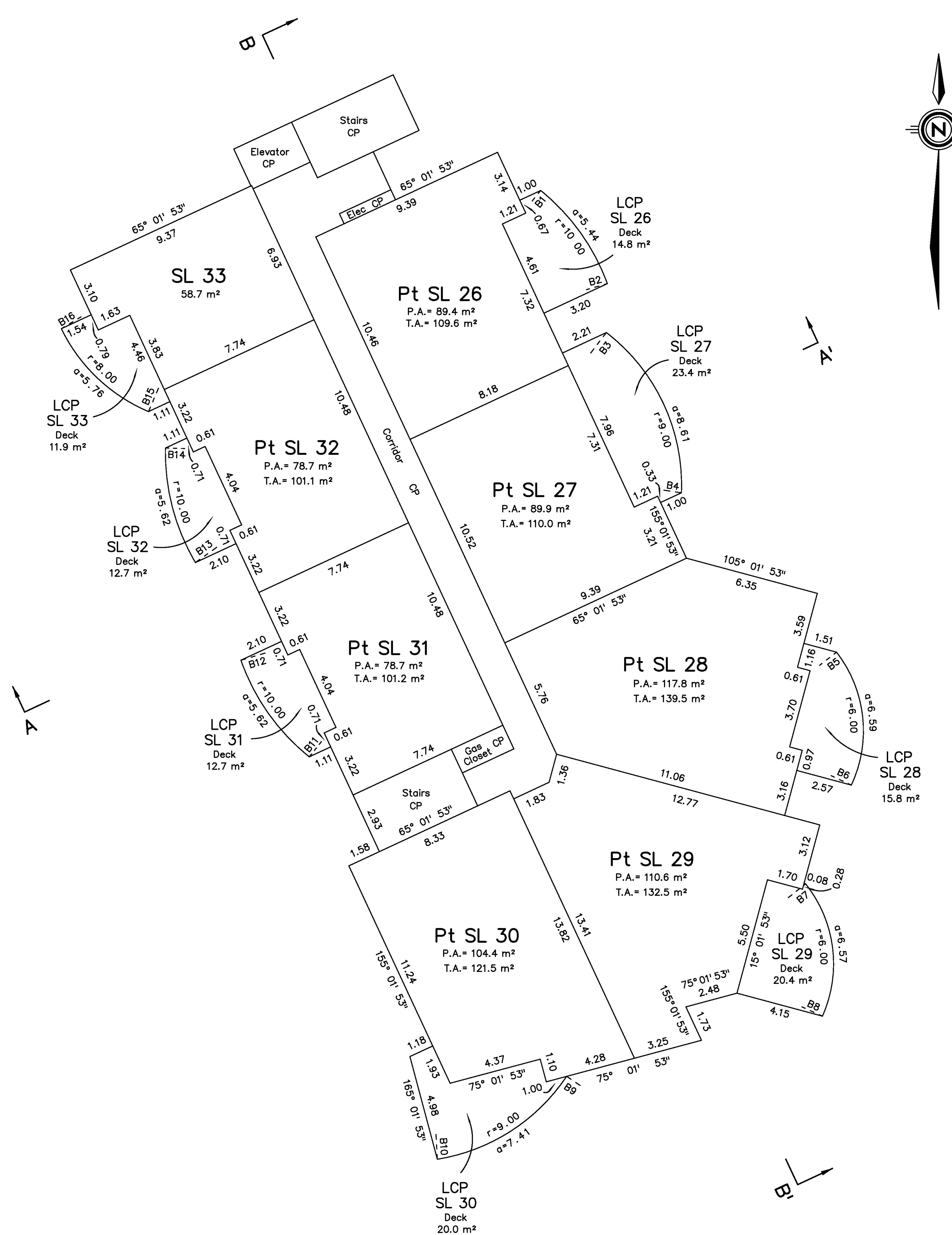


The intended plot size of this plan is 432 mm in width by 559 mm in height (C size) when plotted at a scale of 1:150

See Sheet 1 for Legend

Radial Bearing Table

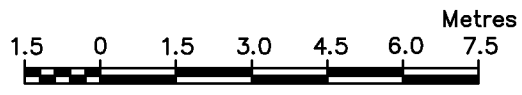
Number	Radial Bearing
B1	38° 49' 09"
B2	69° 59' 17"
B3	37° 36' 30"
B4	92° 25' 17"
B5	52° 10' 38"
B6	115° 06' 26"
B7	51° 21' 21"
B8	114° 05' 41"
B9	123° 46' 31"
B10	170° 56' 56"
B11	38° 37' 49"
B12	70° 49' 50"
B13	59° 14' 42"
B14	91° 26' 43"
B15	22° 55' 05"
B16	64° 10' 16"



# Floor Plans - Fifth Floor Parts Strata Lots 26 to 32

Sheet 7 of 8 Sheets

Strata Plan EPS620

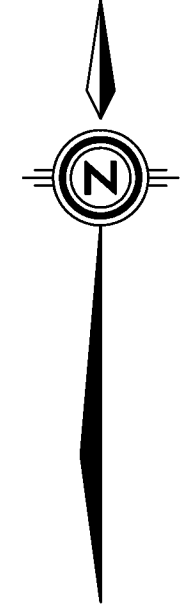
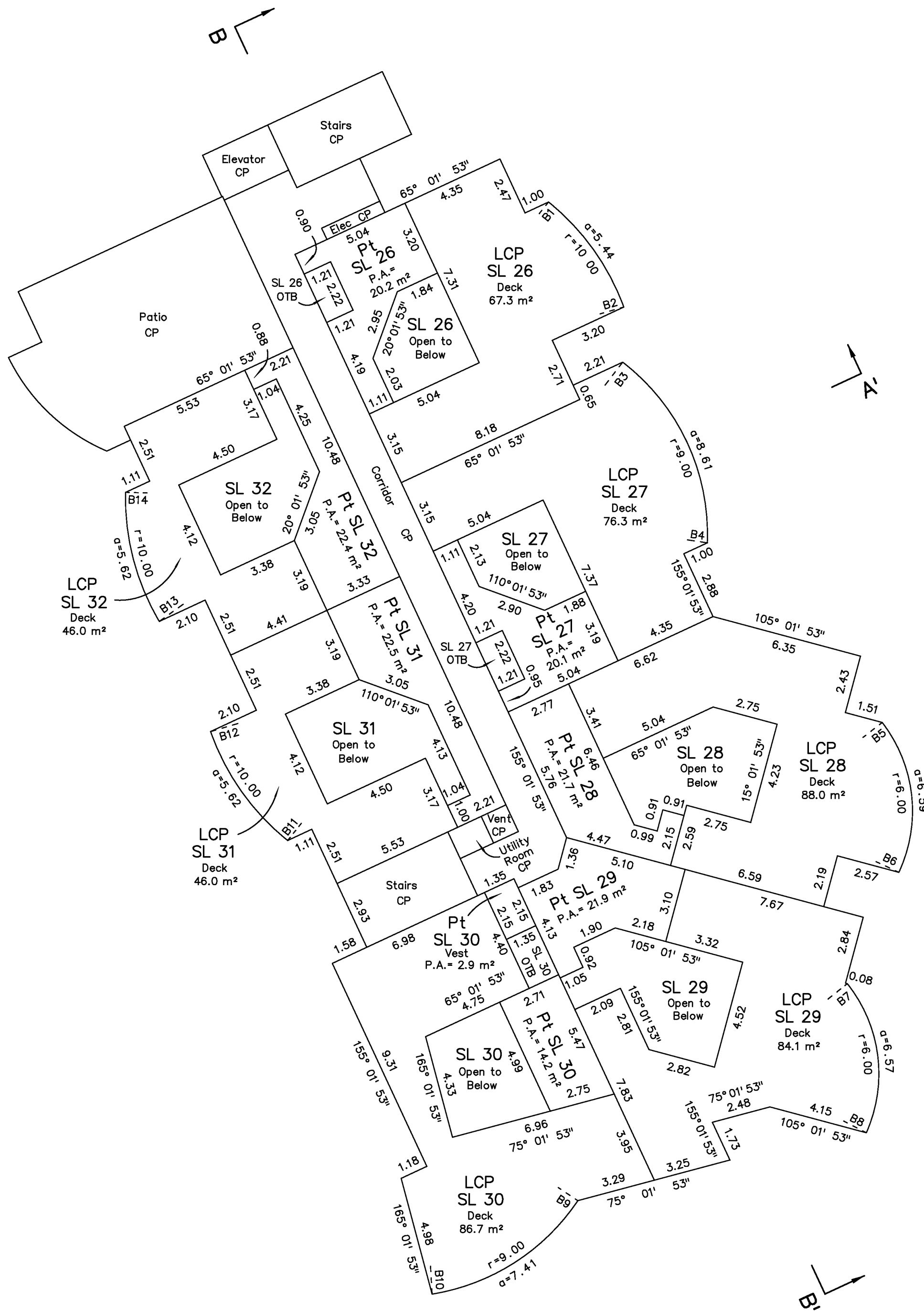


The intended plot size of this plan is 432 mm in width by 559 mm in height (C size) when plotted at a scale of 1:150

See Sheet 1 for Legend

Radial Bearing Table

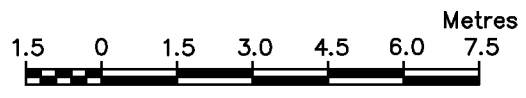
Number	Radial Bearing
B1	38° 49' 09"
B2	69° 59' 17"
B3	37° 36' 30"
B4	92° 25' 17"
B5	52° 10' 38"
B6	115° 06' 26"
B7	51° 21' 21"
B8	114° 05' 41"
B9	123° 46' 31"
B10	170° 56' 56"
B11	38° 37' 49"
B12	70° 49' 50"
B13	59° 14' 42"
B14	91° 26' 43"
B15	22° 55' 05"
B16	64° 10' 16"



# Cross Sections

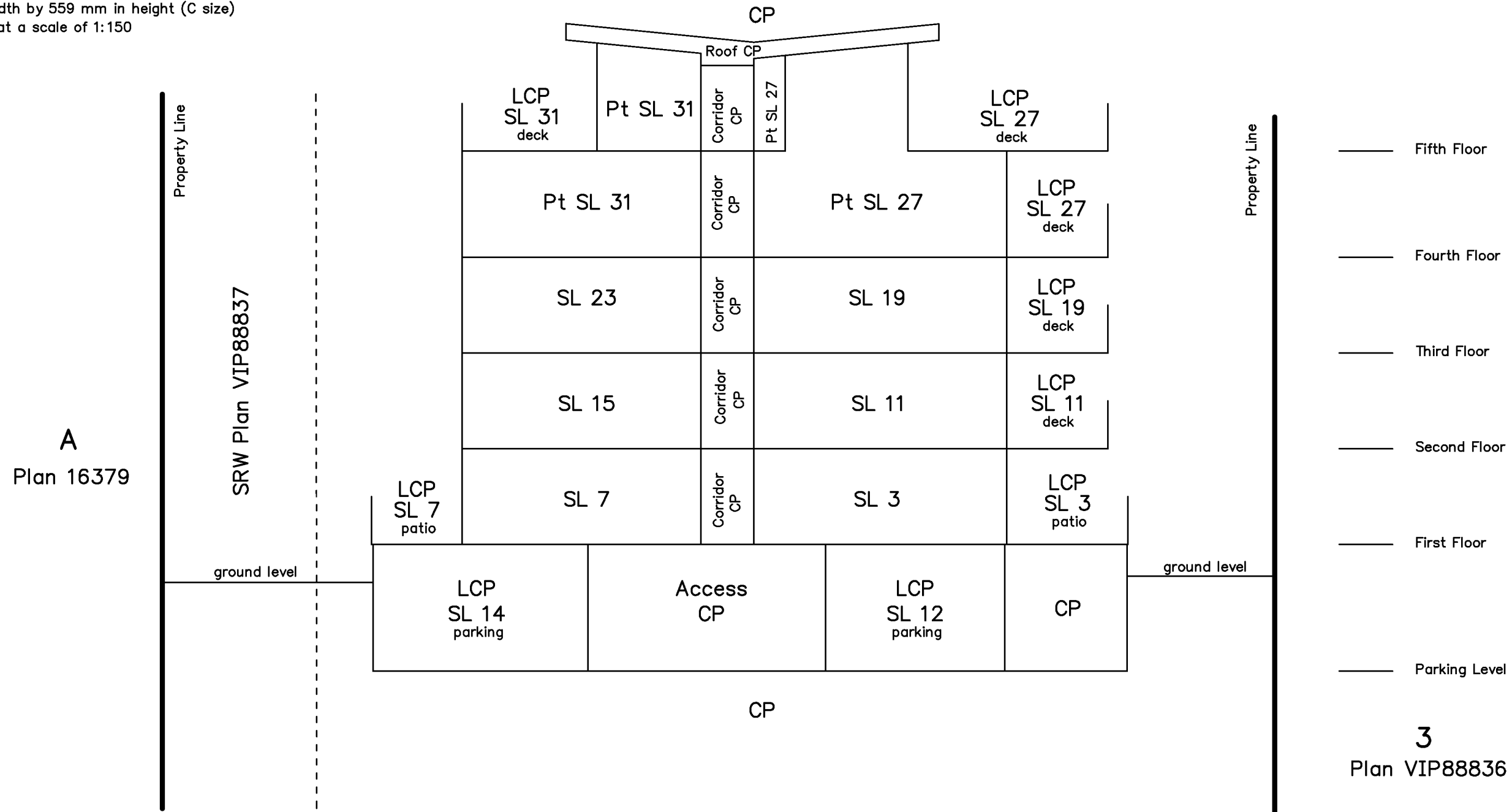
Sheet 8 of 8 Sheets

## Strata Plan EPS620



The intended plot size of this plan is  
432 mm in width by 559 mm in height (C size)  
when plotted at a scale of 1:150

### A - A'



### B - B'

