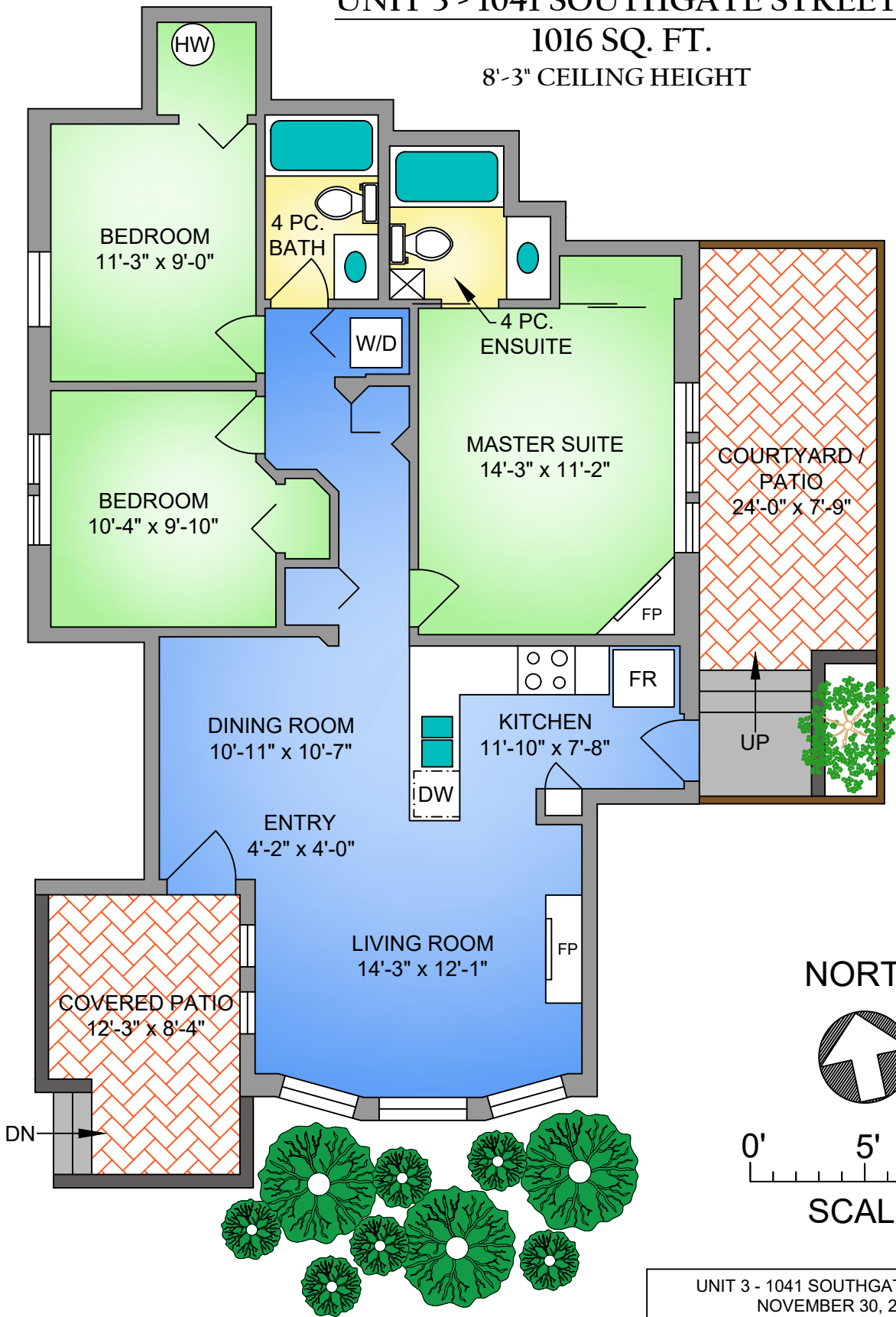


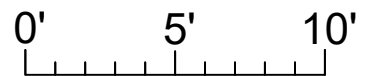
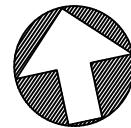
UNIT 3 - 1041 SOUTHGATE STREET

1016 SQ. FT.

8'-3" CEILING HEIGHT



NORTH



SCALE

UNIT 3 - 1041 SOUTHGATE STREET
NOVEMBER 30, 2018

PREPARED FOR THE EXCLUSIVE USE OF JOHN VERNON
PLANS MAY NOT BE 100% ACCURATE, IF CRITICAL BUYER TO VERIFY.

FLOOR	AREA (SQ. FT.)	
	FINISHED	PATIO
FIRST	1016	279



250-884-9753
matt@propermeasure.com
www.propermeasure.com