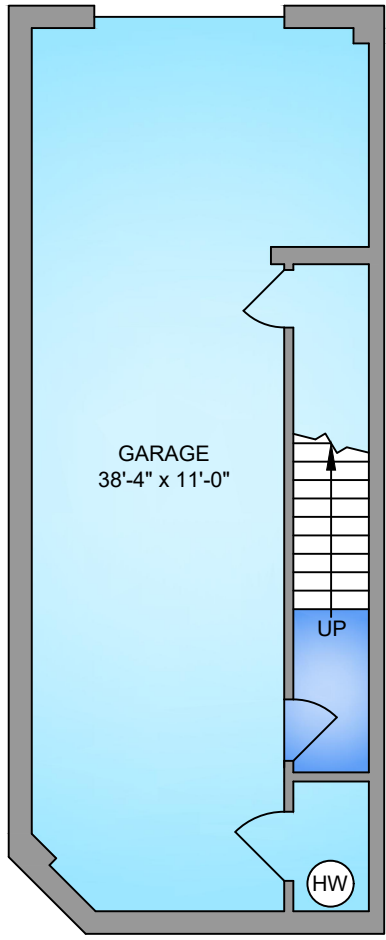
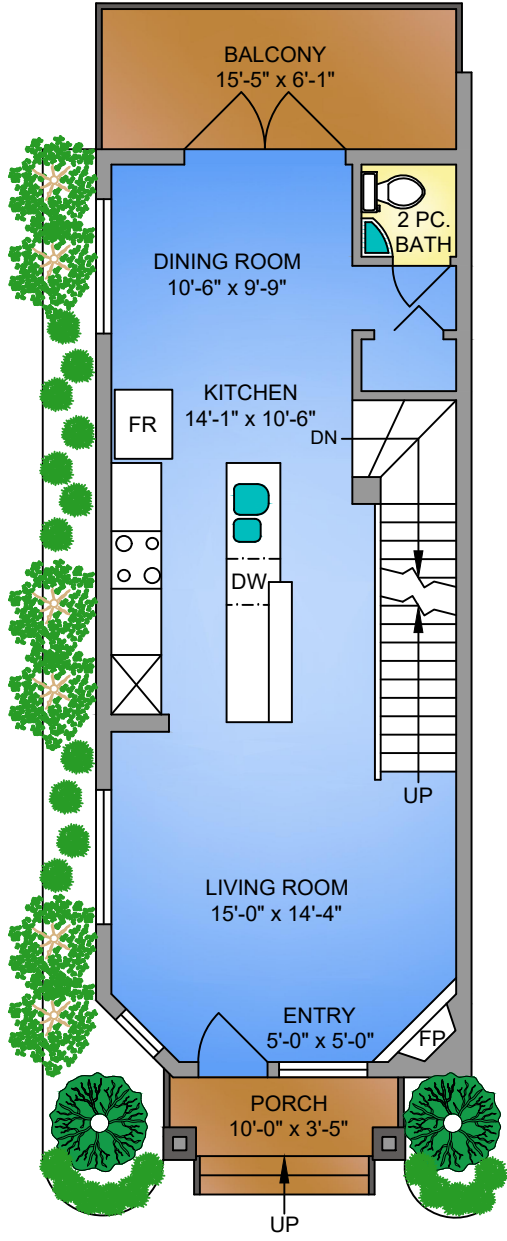


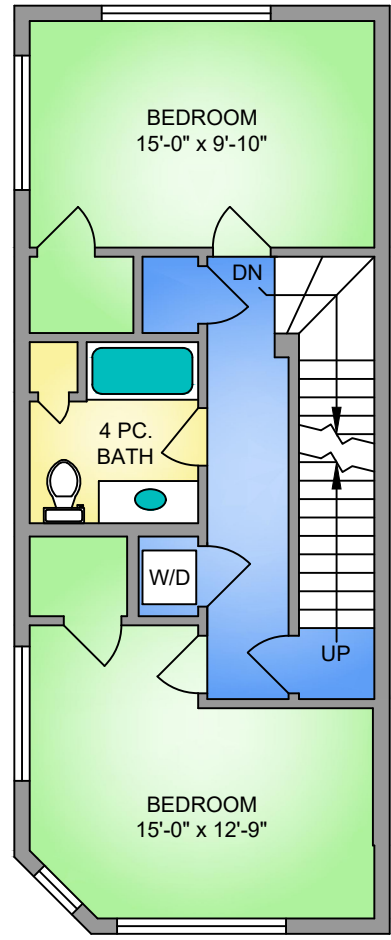
FIRST FLOOR
56 SQ. FT.
9' CEILING HEIGHT



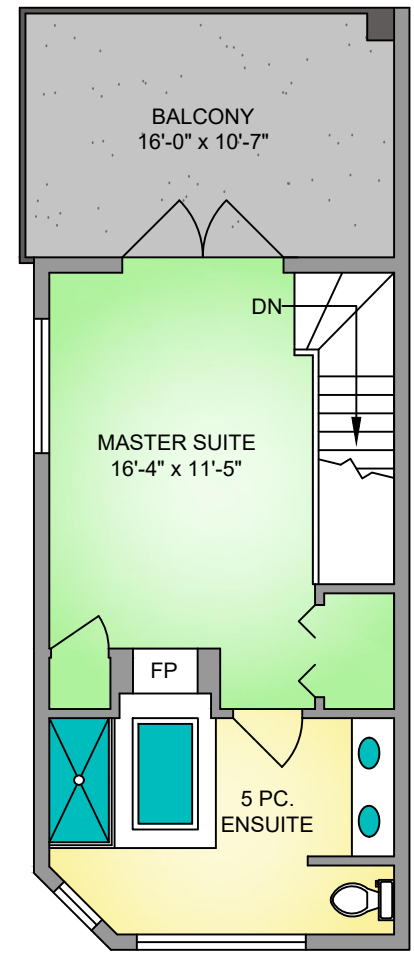
SECOND FLOOR
623 SQ. FT.
9' CEILING HEIGHT



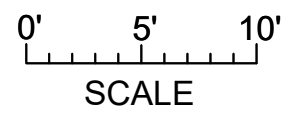
THIRD FLOOR
623 SQ. FT.
9' CEILING HEIGHT



FOURTH FLOOR
462 SQ. FT.
9' CEILING HEIGHT



NORTH



6851 LINCROFT ROAD
JULY 1, 2020
PREPARED FOR THE EXCLUSIVE USE OF JOHN VERNON & ASSOCIATES
PLANS MAY NOT BE 100% ACCURATE, IF CRITICAL BUYER TO VERIFY.

FLOOR	AREA (SQ. FT.)		
	FINISHED	GARAGE	PORCH/BALCONY
FIRST	56	567	-
SECOND	623	-	125
THIRD	623	-	-
FOURTH	462	-	168
TOTAL	1764	567	293



250-884-9753
matt@propermeasure.com
www.propermeasure.com

