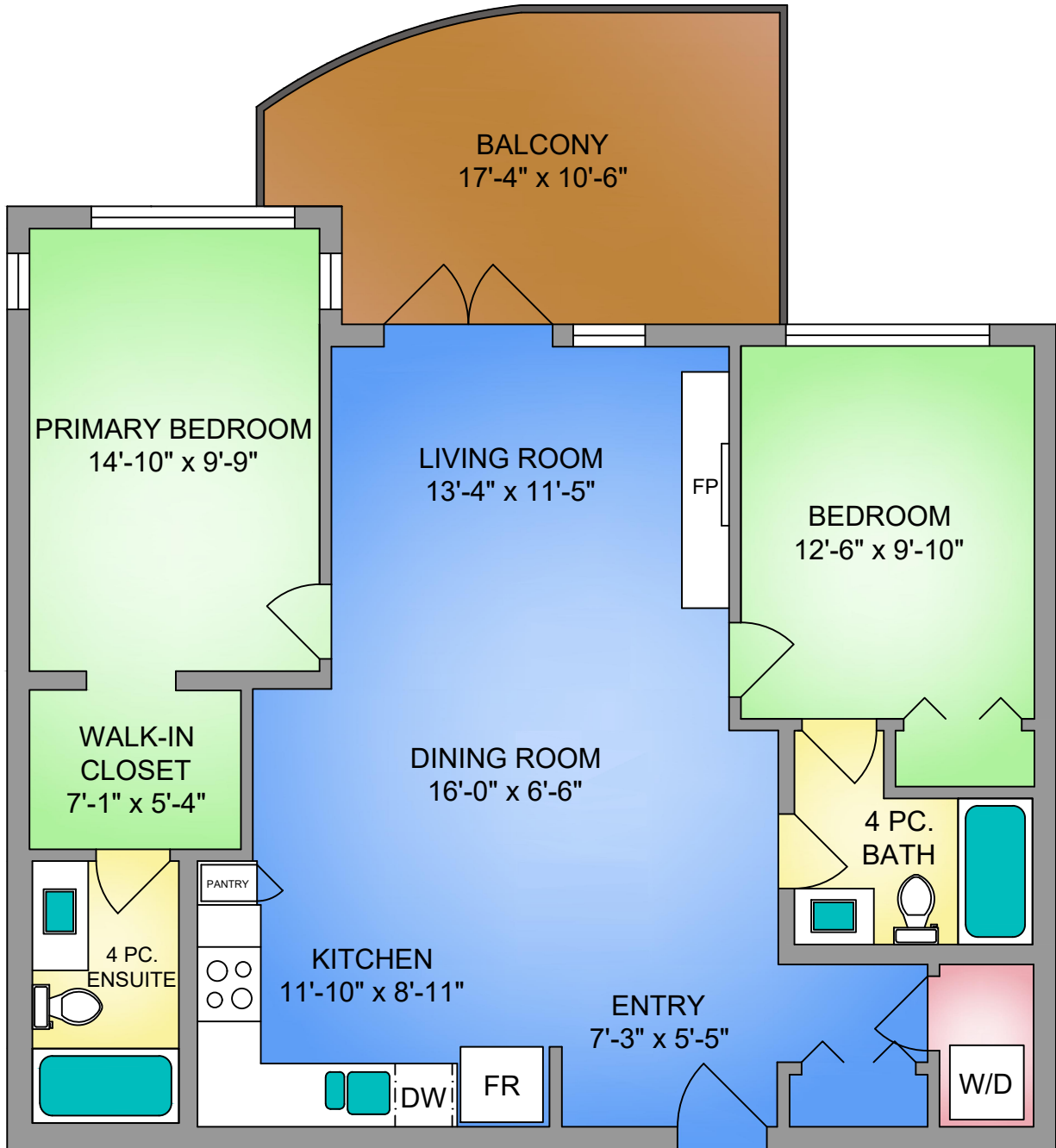


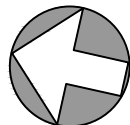
UNIT 302 - 6591 LINCROFT ROAD

965 SQ. FT.

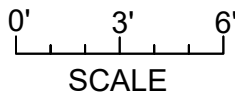
9' CEILING HEIGHT



NORTH



250-884-9753
 matt@propermeasure.com
 www.propermeasure.com



UNIT 302 - 6591 LINCROFT ROAD JUNE 21, 2021 PREPARED FOR THE EXCLUSIVE USE OF JOHN VERNON PLANS MAY NOT BE 100% ACCURATE, IF CRITICAL BUYER TO VERIFY.		
FLOOR	AREA (SQ. FT.)	
	FINISHED	BALCONY
THIRD	965	160