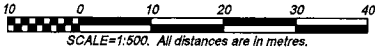


**SUBDIVISION PLAN OF LOTS 27 AND 28,
SECTION 23, SOOKE DISTRICT, PLAN 28746.**

PLAN EPP84019.



BCGS 92B.032

The intended plot size of this plan is 432mm in width by 580mm in height (C Size) when plotted at a scale of 1:500.

Grid bearings are derived from GNSS observations and are referred to the central meridian of UTM Zone 10.

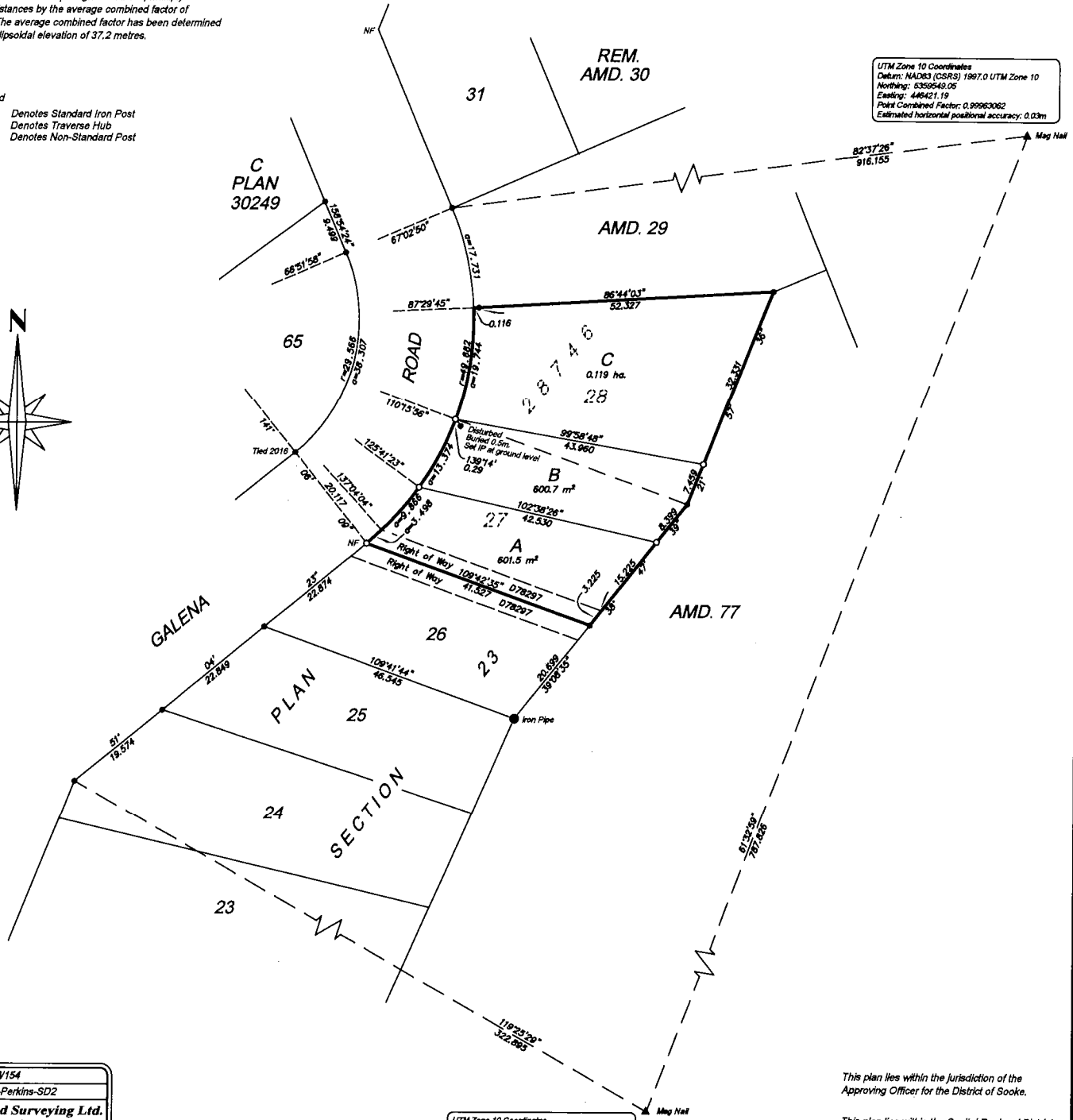
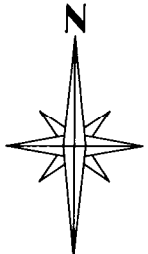
The UTM coordinates and estimated horizontal positional accuracy achieved are derived from single point positioning techniques using the Precise Point Positioning (PPP) service of Natural Resources Canada.

This plan shows horizontal ground-level distances, unless otherwise specified. To compute grid distances, multiply ground-level distances by the average combined factor of 0.99962990. The average combined factor has been determined based on an ellipsoidal elevation of 37.2 metres.

LEGEND

- | | | |
|-------|--------|----------------------------|
| Found | Placed | |
| ● | ○ | Denotes Standard Iron Post |
| ▲ | ○ | Denotes Traversa Hub |
| ● | ○ | Denotes Non-Standard Post |

UTM Zone 10 Coordinates
Datum: NAD83 (CSRS) 1997.0 UTM Zone 10
Northing: 6359549.05
Easting: 446421.19
Point Combined Factor: 0.99963062
Estimated horizontal positional accuracy: 0.03m



File: 0865-JK-W154
Archive: W154-Perkins-SD2
Island Land Surveying Ltd.
#117-693 Hoffman Avenue
Victoria B.C. V9B 4X1
TEL 250.475.1515 fax 250.475.1516
www.islandsurveying.ca

UTM Zone 10 Coordinates
Datum: NAD83 (CSRS) 1997.0 UTM Zone 10
Northing: 6359173.87
Easting: 445728.77
Point Combined Factor: 0.99962919
Estimated horizontal positional accuracy: 0.03m

This plan lies within the jurisdiction of the Approving Officer for the District of Sooke.
This plan lies within the Capital Regional District.
The field survey represented by this plan was completed on the 25th day of July, 2018
Jason C. Kozina, BCLS 787