

SUBDIVISION PLAN OF PART OF LOT A, SECTION 22, SOOKE DISTRICT, PLAN VIP76642, EXCEPT PART IN PLANS VIP84457 AND VIP89191.

PLAN EPP77292

BOGS 928.032

SCALE 1:500



THE INTENDED PLOT SIZE OF THIS PLAN IS 980mm IN WIDTH BY 660mm IN HEIGHT (2:302) WHEN PLOTTED AT A SCALE OF 1:500.

LEGEND

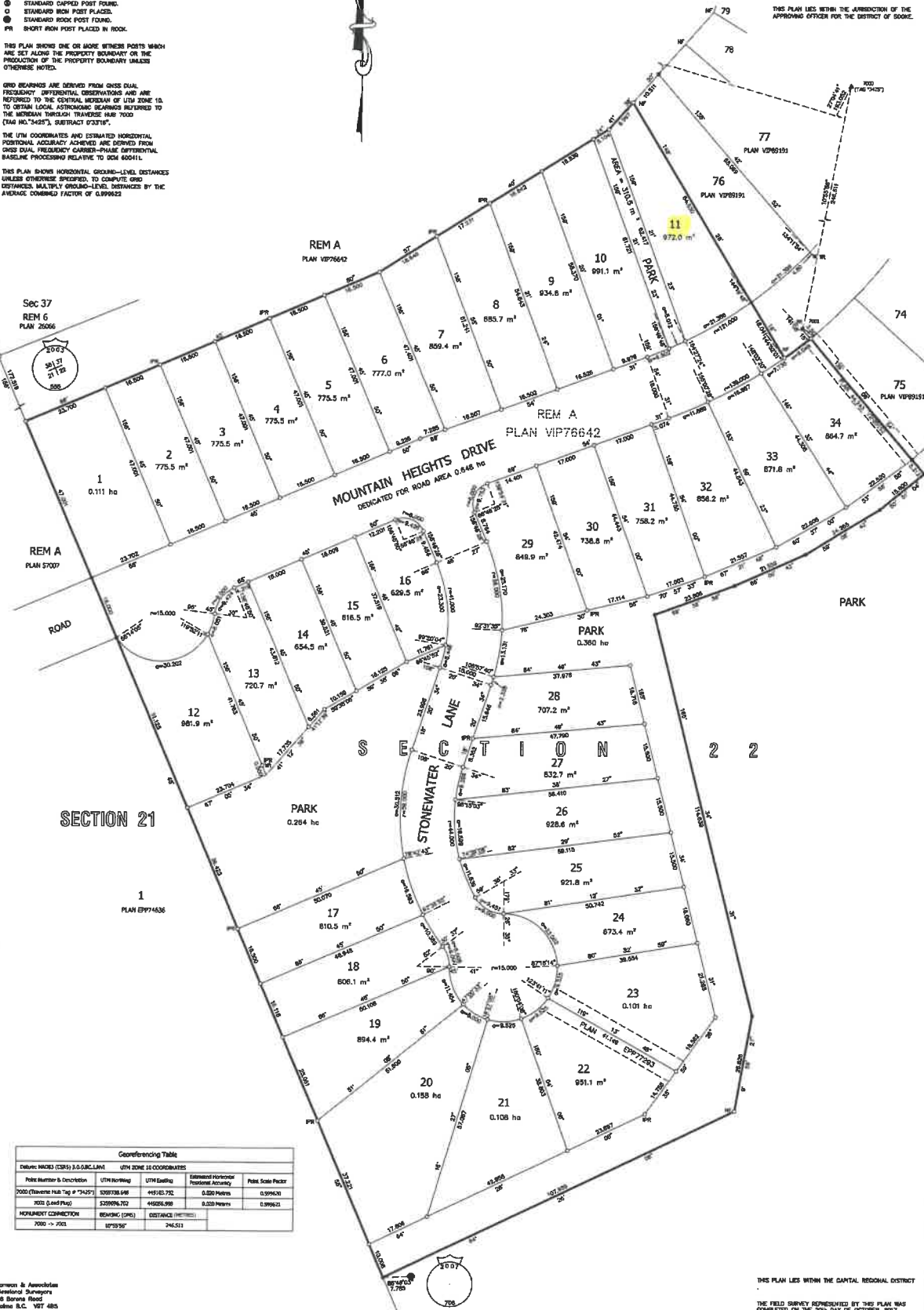
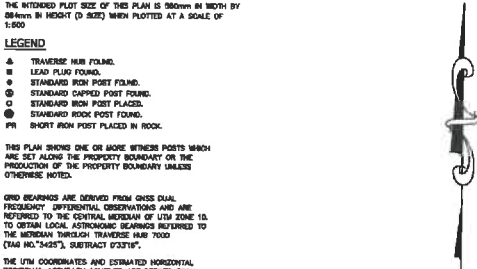
- ▲ TRANSVERSE IRON FOUND.
- LEAD PILE FOUND.
- STANDARD IRON POST FOUND.
- ⊙ STANDARD CHIPPED POST FOUND.
- STANDARD IRON POST PLACED.
- STANDARD ROCK POST FOUND.
- PR SHORT IRON POST PLACED IN ROCK.

THIS PLAN SHOWS ONE OR MORE WITNESS POINTS WHICH ARE SET ALONG THE PROPERTY BOUNDARY ON THE PRODUCTION OF THE PROPERTY BOUNDARY UNLESS OTHERWISE NOTED.

GRID BEARINGS ARE DERIVED FROM GNSS DATA, FREQUENTLY DIFFERENTIAL OBSERVATIONS AND ARE REFERRED TO THE CENTRAL MERIDIAN OF UTM ZONE 18. TO OBTAIN LOCAL ASTROMETRIC BEARINGS REFERRED TO THE MERIDIAN THROUGH TRANSFORM MAP 7000 (TAG NO. 7425), SUBTRACT 0°37'18".

THE UTM COORDINATES AND ESTIMATED HORIZONTAL POSITIONAL ACCURACY ACHIEVED ARE DERIVED FROM GNSS DATA, FREQUENTLY GATHERED THROUGH DIFFERENTIAL PROCESSING RELATIVE TO GDA 800011.

THIS PLAN SHOWS HORIZONTAL GROUND-LEVEL DISTANCES UNLESS OTHERWISE SPECIFIED. TO COMPUTE GRID DISTANCES, MULTIPLY GROUND-LEVEL DISTANCES BY THE AVERAGE CORRECTION FACTOR OF 0.999622.



Sec 37
REM 6
PLAN 26066

REM A
PLAN 57007

SECTION 21
1
PLAN EPP74636

REM A
PLAN VIP76642

REM A
PLAN VIP76642

77
PLAN VIP89191

76
PLAN VIP89191

75
PLAN VIP89191

Georeferencing Table				
Deliverables (DMS) 3-D G.C. PLAN	UTM ZONE 18 COORDINATES			
Point Number & Description	UTM Northing	UTM Easting	Estimated Horizontal Precision Accuracy	Point Scale Factor
7000 (Reference Mark Tag # 79429)	539738.648	451431.792	0.550 Meters	0.999621
7070 (Lead Flag)	539996.752	450206.989	0.550 Meters	0.999621
NEAREST CONNECTION				
7000 -> 7071	87°53'56"	246.513		

Williams & Associates
Professional Surveyors
3658 Barona Road
Nanaimo B.C. V8T 4B5
P.L.D. 19146-3 SUBDIVISION

BASPLAN: 18146

THIS PLAN LIES WITHIN THE JURISDICTION OF THE APPROVING OFFICER FOR THE DISTRICT OF SOOKE.

THIS PLAN LIES WITHIN THE CAPITAL REGIONAL DISTRICT
THE FIELD SURVEY REPRESENTED BY THIS PLAN WAS COMPLETED ON THE 20th DAY OF OCTOBER, 2017
BRIAN S. FOWLER, S.C.L.S. 672.

